
QLogic® StorFusion™ FC Ping and FC Trace Route with QLogic Fibre Channel Adapters

Applicable Products

QLogic Model	Description
2600 Series	Gen5 and Enhanced Gen5 16Gb Fibre Channel Adapters
2500 Series	8Gb Fibre Channel Adapters

1 Introduction

This application note provides instructions to system administrators for using the FC Ping and FC Trace Route features on QLogic® StorFusion™-enabled Fibre Channel Host Bus Adapters for servers and storage. FC Ping and FC Trace Route are easily accessed within the QLogic QConvergeConsole® (QCC) GUI management application, and provide a simple way to verify connectivity between a SAN-connected server and storage device.

These features provide the following:

- **FC Ping** allows you to ping a Fibre Channel N_Port or end device to verify the connectivity between the host and target in the Fibre Channel fabric within QConvergeConsole.
- **FC Trace Route** obtains the path information between two fabric ports (F_Ports) from the fabric configuration server within QConvergeConsole.

2 Prerequisites

Before you begin, ensure that the following components are installed:

- QConvergeConsole version 1.0.222 or later
- Compatible Brocade® Gen5 16Gb Fibre Channel switch with Fabric OS® (FOS) 7.3 or later
- QLogic 2500 Series or 2600 Series Fibre Channel Host Bus Adapters with firmware version 8.2.1 or later


3 Using FC Ping and FC Trace Route to Verify Connectivity

When an application is not running correctly, use FC Ping (see [Section 3.1](#)) or FC Trace Route (see [Section 3.2](#)) to determine quickly whether or not the problem results from connectivity between a user-specified adapter port and the server.

3.1 Verifying Connectivity Using FC Ping

The FC Ping option uses the SCSI inquiry command across the SAN to verify connectivity.

To verify connectivity with FC Ping:

1. Launch QConvergeConsole GUI and in the tree pane on the left, select the server for which you want to verify connectivity.
2. In the content pane on the right, click the **Topology** tab.
3. On the Topology page next to **Topology**, click **Physical**.
4. On the physical topology map next to the Host Bus Adapter, click the gear icon .

A shortcut menu provides options for **FC Ping** and **FC Trace Route**, as shown in [Figure 3-1](#).

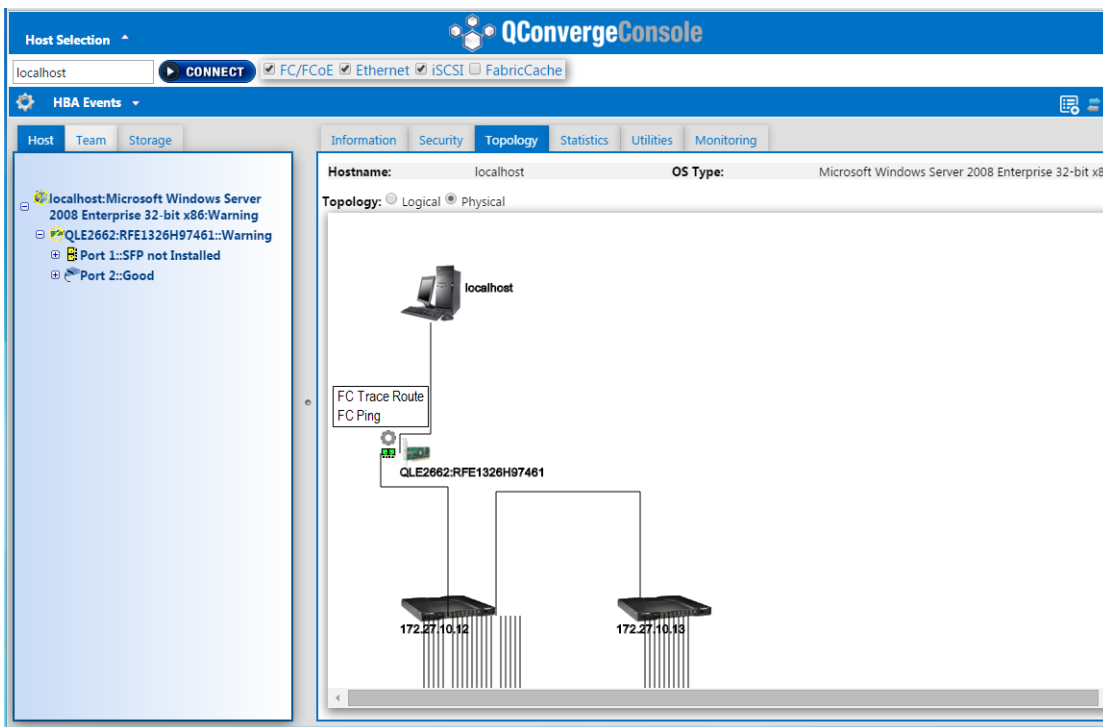


Figure 3-1. Server Topology, Physical View

5. Select **FC Ping**.
6. In the Adapter Selection dialog box, select the adapter to verify, and then click **Next**.
7. In the Device Selection dialog box, select the disk to ping, and then click **Ping**.


If the *FC Ping success* message appears, the connection between the selected server and target storage is working properly. If problems persist, additional diagnostics and troubleshooting may be required.

3.2

Verifying Connectivity Using FC Trace Route

The FC Trace Route option provides a visual display of the connection path.

To verify connectivity with FC Trace Route:

1. Launch QConvergeConsole GUI and in the tree pane on the left, select the server for which you want to verify connectivity.
2. In the content pane on the right, click the **Topology** tab.
3. On the Topology page next to **Topology**, click **Physical**.
4. On the physical topology map next to the Host Bus Adapter, click the gear icon .

A shortcut menu provides options for **FC Ping** and **FC Trace Route**, as shown in [Figure 3-1 on page 2](#).

5. Select **FC Trace Route**.
6. In the Adapter Selection dialog box, select the adapter to verify, and then click **Next**.
7. In the Device Selection dialog box, select the disk to trace, and then click **Trace**.

The physical topology map shows animation of the route being traced between the selected adapter and disk. If the route is not correct, additional diagnostics and troubleshooting may be required.



Document Revision History	
Revision A, February 9, 2016	
Changes	
Initial release of new application note.	



Corporate Headquarters QLogic Corporation 26650 Aliso Viejo Parkway Aliso Viejo, CA 92656 949.389.6000 www.qlogic.com

International Offices UK | Ireland | Germany | France | India | Japan | China | Hong Kong | Singapore | Taiwan | Israel

© 2016 QLogic Corporation. All rights reserved worldwide. QLogic, the QLogic logo, QConvergeConsole, and StorFusion are trademarks or registered trademarks of QLogic Corporation. Brocade and Fabric OS are registered trademarks of Brocade Communications Systems, Inc. All other brand and product names are trademarks or registered trademarks of their respective owners.

This document is provided for informational purposes only and may contain errors. QLogic reserves the right, without notice, to make changes to this document or in product design or specifications. QLogic disclaims any warranty of any kind, expressed or implied, and does not guarantee that any results or performance described in the document will be achieved by you. All statements regarding QLogic's future direction and intent are subject to change or withdrawal without notice and represent goals and objectives only.

